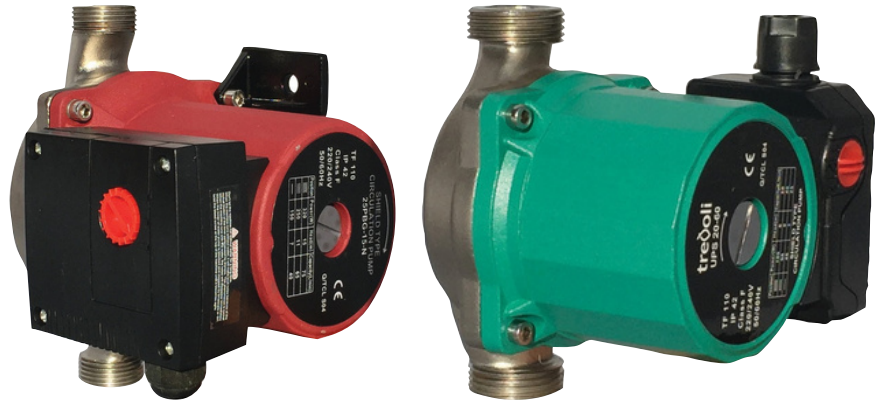


Trevoli UPS Series				
Model	Speed	Inlet/Outlet	Phase	Voltage
UPS 20-60	Input Power Speed 1: 46 w	25mm 20mm Unions	1	220-240
	Input Power Speed 2: 90 w			
	Input Power Speed 3: 100 w			
UPS 25-150	Input Power Speed 1: 150 W	25mm 20mm Unions	1	220-240
	Input Power Speed 2: 250 W			
	Input Power Speed 3: 320 W			

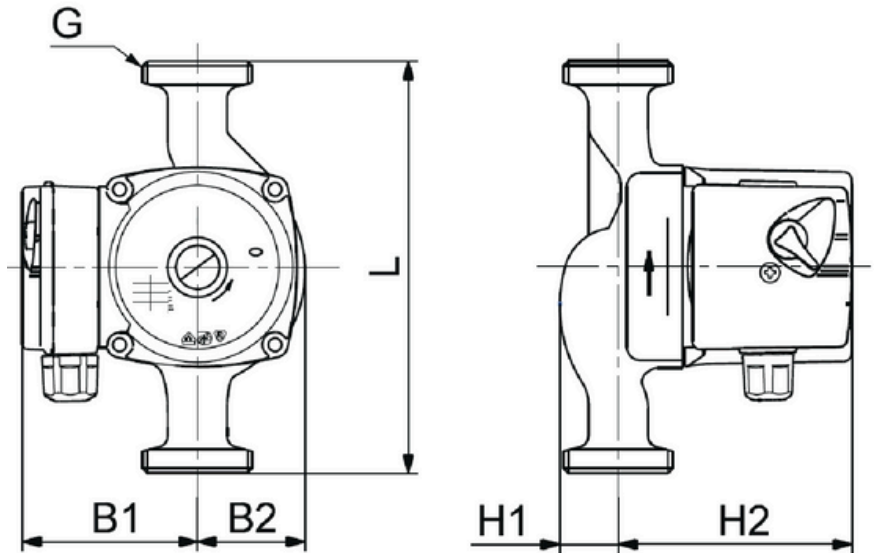
DESCRIPTION

The Trevoli UPS range of 3-speed circulator pumps are available in two sizes. These pumps can be used in both open and closed systems and are a canned-rotor type, i.e. pump and motor form an integral unit without a shaft seal and with only two gaskets for sealing. The bearings are lubricated by the pumped liquid. UPS pumps are designed for circulation of liquids in heating and air-conditioning systems. Typical applications include one- and two-pipe heating systems, under floor heating systems, solar heating systems and more.



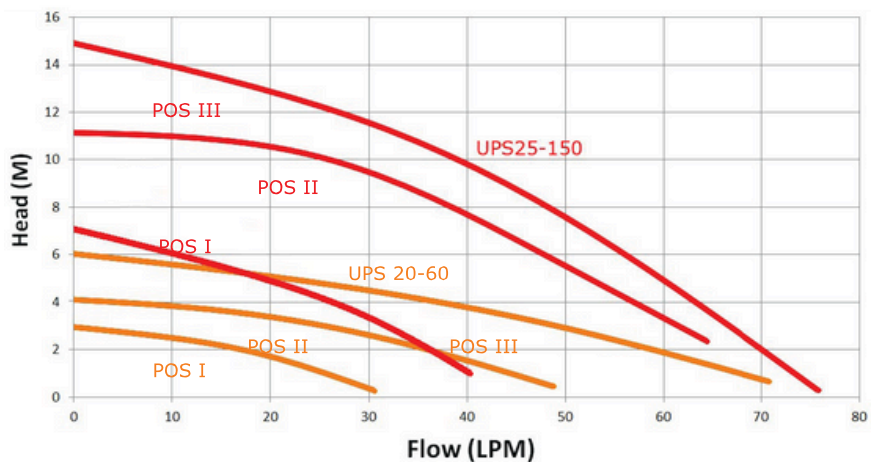
FEATURES

- **Maximum operating pressure:** 10 bar
- **Port to port dimensions:**
130mm (UPS-20-60)
185mm (UPS-25-150)
- **Port size:** 25mm BSP thread
- **Unions:** Brass 20mm
- Maintenance-free
- Low noise
- Low energy consumption
- Corrosion-resistant stainless steel pump housing



TECHNICAL FEATURES

- **Enclosure class:** IP42
- **Insulation class:** F
- **Duty rating:** Continuous
- **Liquid temperature range:** 0-110° C
- **Maximum ambient temperature:** 40° C
- **Maximum operating pressure:** 10 bar
- **Port to port dimensions:** 130mm
- **Port size:** 25mm BSP thread
- **Unions:** Brass 20mm



Dimensions						
Model	L	H1	H2	B1	B2	G
UPS-20-60	130mm	28mm	97mm	80mm	47mm	25mm
UPS 25-150	185mm	28mm	145mm	90mm	66mm	25mm

